

CN.

EN.

产品综述 / 万磊习惯于创造新品。全新迷彩金沙，甄选密度更高的珠光粉，改善了传统金沙表面发黑的现象。

它能产生珠光般闪耀光泽，并根据光线的折射改变外观，表面的珠光效果在专业灯光的调试下更为耀眼，有助于提升空间的整体亮度。

产品特点 / 万磊迷彩金沙是一种室内装饰涂层，由高品质的丙烯酸乳液与精选级绒毛混制而成，可营造出独特的光影效果。使用迷彩金沙可以实现创新的色彩和触觉感官，使环境极为舒适，并符合室内装饰最前沿的趋势，保持高品质的居室环境。迷彩金沙是一种具有纹理效果的涂料，具有结晶饰面，可通过其广泛的闪烁暖色和冷色将沙漠的氛围反射到您的家中。

珠光温润光泽

迷彩金沙具有专业品质，是一种耐用、耐磨损，具有天然珠光的环保涂料，它拥有双层结构，弹性柔光工艺。

主要成分 / 100%的丙烯酸树脂、微米级珠光粉、纳米碳酸钙粉，纯净水

色系选择 / 提供4种基料作为基础配方：

MG金色、GD古典金沙、MS银色、MSX银色细砂基料，基础状态均为白色迷彩金沙以其亮白色、无色素的天然状态为基础，辅以无机颜料以搭配配色方案。

颜料和添加剂的使用：配以万磊专业调色（50g/瓶）的无机色浆予以使用

配套体系 / 万磊沉浆砂底漆 + 迷彩金沙

准备工具 / 羊毛辊筒，预调色搅拌机，调色托盘，毛刷

兑水比率 / 最高不超过35%的兑水率

Overview / Vanlei is used to creating new products. The new Metallic Sparkle Paint is made from a higher density pearlescent powder, which improves on the darkness of traditional gold sand.

It produces a pearl-like shine and changes its appearance according to the refraction of light. The pearlescent effect on the surface is more dazzling under professional lighting, which helps to enhance the overall brightness of the space.

Features / Vanlei Metallic Sparkle Paint is an upholstery coating made from a high quality acrylic emulsion mixed with selected grades of fluff to create unique light and shadow effects. With Camouflage Blonde you can achieve innovative colors and tactile sensations that make the environment extremely comfortable and in line with the most cutting edge trends in interior decoration, maintaining a high quality living environment. Camouflage Blonde is a textured effect paint with a crystalline finish that reflects the ambience of the desert into your home with its wide range of shimmering warm and cool colors.

Pearlescent Warm Gloss

Metallic Sparkle Paint is a professional quality, durable, wear-resistant, eco-friendly paint with a natural pearlescent sheen that has a dual-layer construction and a flexible soft-luster process.

Net weight / 100% acrylic resin, micron pearl powder, nano calcium carbonate powder, pure water

Color Selection / Four base materials are provided as the basic formula:

MG gold, GD classical gold sand, MS silver, MSX silver fine sand base material, the base state is white camouflage gold sand in its bright white, no pigment natural state as the basis, supplemented by inorganic pigments to match the colour scheme.

The use of pigments and additives: with Wanlei professional colour mixing (50g/bottle) inorganic colour paste to be used.

Complementary system / Texture white primer + Metallic Sparkle Paint

Tools / Wool Rollers, Pre-color Mixers, Color Mixing Trays, Brushes

Water Ratio / Maximum of 35% watering down

万磊建筑涂料有限公司

Foshan City Nanhai Wanlei Building Paint CO., LTD



广东生产基地（代码FS）

广东省佛山市南海区松岗万石工业区

广州分公司

广州市荔湾区羊城装饰材料市场172号

广西生产基地（代码QT）

广西壮族自治区贵港市覃塘区产业园甘化园区

南宁分公司

广西壮族自治区南宁市兴宁区快环建材市场

△ 注意

公司根据产品技术和发展需要，有权对产品配方进行更新升级，而不对外另行公布，请以最新样板册颜色为准，不便之处，敬请原谅！

4000-147-187

www.fswanlei.com

PRODUCT

迷彩金沙
Metallic Sparkle Paint



MS - 240901

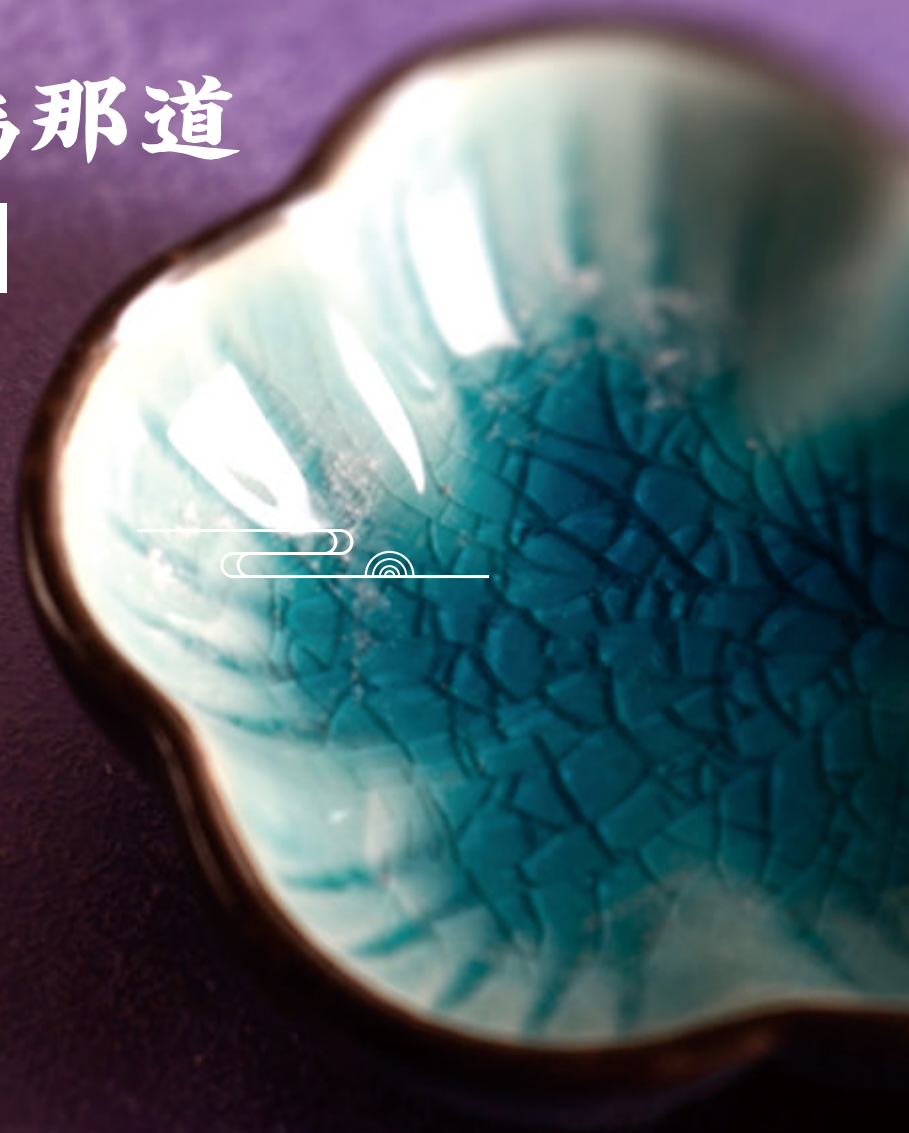
万磊



GOOD COATINGS IN CHINA
SINCE 1991



我們會成為那道
|| 國貨之光 ||



氣風發，準備迎接下一個三十年。」

註定充滿挑戰，「万磊已經三十歲了，我們正意國貨最好的詮釋。國貨的崛起之路註定不平凡，的舶來品。「堅持原創，堅持中國製造」，才是的主旋律。適合國人的，不見得是各種價格虛高在當代，『中國造』正在一步一步成為這個時代

是堅定的「國產支持者」。

矛盾催生新事物，國產與進口之間，万磊從來都

用时间定义好涂料，用技术沉淀中国货。

万磊涂料
【中国造，正当潮】

▲ MSX 银色细砂基料 / MSX Silver Fine sand base



S底 白色

MSX 细银

▲ MS 银色基料 / MS Silver Base



S底 白色

MS 银

▲ MG 金色基料 / MG Gold Base



S底 + 005Q (50g)

MG 金

Base Material

迷彩金砂 · 4种基料

迷彩金砂是一种具有独特纹理效果的涂料, 提供3种基料作为基础配方:

Metallic Sparkle Paint is a paint with a unique textured effect and is offered in 3 bases as a base formula:

| | |
|-----|---------------------------------|
| MSX | 银色细沙基料 Silver Fine sand base |
| MS | 银色基料 MS Silver base |
| MG | 金色基料 MG Gold base |
| GD | 古典金砂 Classical Gold Sand |

迷彩金砂的3个基料, 基础状态均为白色, 以其亮白色、无色素的天然状态为基础, 辅以无机颜料以搭配配色方案。

The 3 base materials of Metallic Sparkle Paint are all white in their base state, based on their bright white, non-pigmented natural state, supplemented with inorganic pigments to match the color scheme.

· 颜料和添加剂的使用: 配以万磊专业调色 (50g/瓶) 的无机色浆予以使用。

- The use of pigments and additives: with Wanlei professional color mixing (50g/bottle) inorganic color paste to be used.



MSX

银色细沙基料
Silver Fine sand base



S底+008Q(50g) MSX+008Q(50g)



S底+004Q(50g) MSX+004Q(50g)



S底+029Q(50g) MSX+029Q(50g)



S底+027Q(50g) MSX+027Q(50g)



S底+026Q(50g) MSX+026Q(50g)



S底+022Q(50g) MSX+022Q(50g)



S底+028Q(50g) MSX+028Q(50g)



S底+024Q(50g) MSX+024Q(50g)

MSX

银色细沙基料
Silver Fine sand base



S底+001Q(50g) MSX+001Q(50g)



S底+009Q(50g) MSX+009Q(50g)



S底+003Q(50g) MSX+003Q(50g)



S底+041Q(50g) MSX+041Q(50g)



S底+023Q(50g) MSX+023Q(50g)



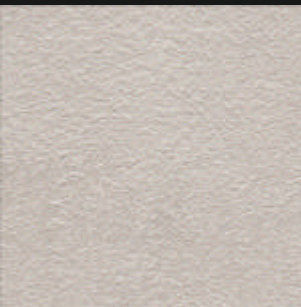
S底+013Q(50g) MSX+013Q(50g)



S底+018Q(50g) MSX+018Q(50g)



S底+060Q(50g) MSX+060Q(50g)



S底+062Q(50g) MSX+062Q(50g)



S底+017Q(50g) MSX+017Q(50g)



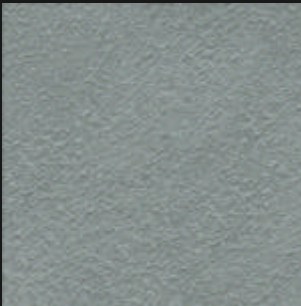
S底+019Q(50g) MSX+019Q(50g)



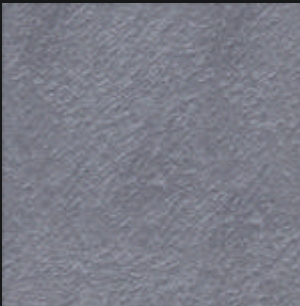
S底+038Q(50g) MSX+038Q(50g)



S底+046Q(50g) MSX+046Q(50g)



S底+050Q(50g) MSX+050Q(50g)



S底+043Q(50g) MSX+043Q(50g)



S底+044Q(50g) MSX+044Q(50g)



GD

古典金砂
Classical Gold Sand



S底 白色

GD 白色

▼ GD 古典金砂 / Classical Gold Sand

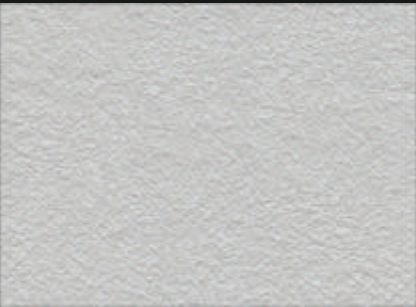
GD

古典金砂
Classical Gold Sand



S底 + 050Q (50g)

GD + 050Q (50g)



S底 + 007Q (50g)

GD + 007Q (50g)



S底 + 048Q (50g)

GD + 048Q (50g)



S底 + 047Q (50g)

GD + 047Q (50g)



S底 + 043Q (50g)

GD + 043Q (50g)



S底 + 046Q (50g)

GD + 046Q (50g)



S底 + 045Q (50g)

GD + 045Q (50g)



S底 + 044Q (50g)

GD + 044Q (50g)



Classical Gold Sand

古典金砂

此款古典金砂主要是由“金、砂、色”三元素组成。通过简易施工,即可展示出金属漆的另一种不同的金属效果,可与不同色彩金属手蜡色搭配,颜色相互交融而不渗色。

This classical gold sand is mainly composed of three elements: gold, sand and colour. Through simple construction, it can show another different metallic effect of metallic paint, and can be matched with different colours of metallic hand wax colours, the colours intermingle with each other without bleeding.



纹理丰满清晰, 色彩通透柔和

Full and clear texture, translucent and soft colours



富有魅力的珍珠光泽

Charming pearl luster



粗狂不失细腻, 独特的3D排列质感

Rough but not lose the delicate, unique 3D arrangement of texture



迷彩金砂

迷彩金砂是一种具有纹理效果的涂料, 具有结晶饰面, 可通过其广泛的闪烁暖色和冷色将沙漠的氛围反射到您的家中。

Metallic Sparkle Paint

Camouflage Blonde is a textured effect paint with a crystalline finish that reflects the ambiance of the desert into your home with its wide range of shimmering warm and cool colors.



MS

银色基料
MS Silver base

vanlei万磊®



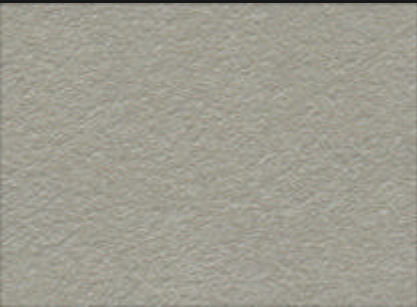
S底 + 006Q (50g)

MS + 006Q (50g)



S底 + 047Q (50g)

MS + 047Q (50g)



S底 + 048Q (50g)

MS + 048Q (50g)



S底 + 006Z (50g x 2)

MS + 006Z (50g x 2)



S底 + 047Z (50g x 2)

MS + 047Z (50g x 2)



S底 + 048Z (50g x 2)

MS + 048Z (50g x 2)



S底 + 005Q (50g)

MS + 005Q (50g)



S底 + 045Q (50g)

MS + 045Q (50g)



S底 + 049Q (50g)

MS + 049Q (50g)



S底 + 005Z (50g x 2)

MS + 005Z (50g x 2)



S底 + 045Z (50g x 2)

MS + 045Z (50g x 2)



S底 + 049Z (50g x 2)

MS + 049Z (50g x 2)

色卡颜色与实际材料颜色有少许差异纯属正常, 请谅解。

Catalog color and the actual material color has a little difference is purely normal, please understand.



珠光温润光泽

迷彩金沙具有专业品质, 是一种耐用、耐磨损, 具有天然珠光的环保涂料, 它拥有双层结构, 弹性柔光工艺。

Pearlescent Warm Gloss

Metallic Sparkle Paint is a professional quality, durable, wear-resistant, eco-friendly paint with a natural pearlescent sheen that has a dual-layer construction and a flexible soft-luster process.



MG 金色基料
MG Gold base



S底 + 005Q (50g) MG + 010S (50g x 4)



S底 + 005Q (50g) MG + 014S (50g x 4)



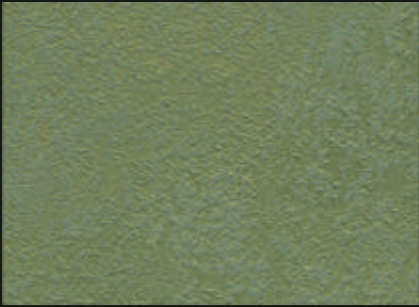
S底 + 005Q (50g) MG + 005S (50g x 4)



S底 + 005Q (50g) MG + 030S (50g x 4)



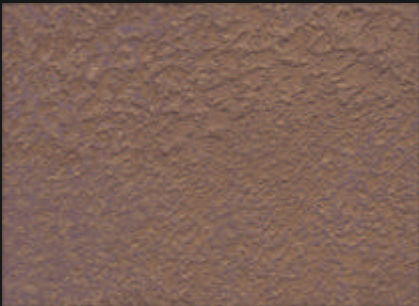
S底 + 005Q (50g) MG + 032S (50g x 4)



S底 + 005Q (50g) MG + 016S (50g x 4)



S底 + 005Q (50g) MG + 019S (50g x 4)



S底 + 005Q (50g) MG + 034S (50g x 4)

vanlei万磊®

/

Metallic Sparkle Paint



流砂纹理清晰, 色彩通透柔和, 光滑和粗糙饰面的搭配方案

/ Clearly textured sand flow, translucent and soft colors, smooth and rough finishes in a matching scheme



珍珠光泽, 双色质感更强

/ Pearly luster with enhanced two-tone



柔软触感, 流砂观感

/ Soft touch, sandblasted look and feel



可以施工在不同介质的墙面

/ Can be applied to walls with different media



没有气味, 稳定

/ Odorless and stable



迷彩金砂

Metallic Sparkle Paint

| 技术参数 | Technical data | | |
|----------|---------------------|-----------------------|-------------------------------|
| 材料性能 | Material Properties | 无溶剂(水基) | Solvent-free (water-based) |
| 干膜厚度 | Thickness | 0.2-0.3mm | 0.2-0.3mm |
| 理论覆盖率 | Coating rate | 4-5m ² /kg | 4-5m ² /kg |
| 干燥时间(表干) | Surface dry | <2h (25-27°C) | <2h (25-27°C) |
| 触干 | Touch dry | <4h (25-27°C) | <4h (25-27°C) |
| 干燥时间(硬) | Hard dry | >24h (25-27°C) | >24h (25-27°C) |
| 涂层 | Coating layer | 2次 | 2 times |
| 使用寿命 | Service life | > 10年 | > 10 years |
| 油漆颜色 | Color selection | 多色选择 | Multi-color selection |
| 施工工具 | Construction Tools | 羊毛辊筒、毛刷 | Wool roller, Thick chip brush |
| 贮存 | Storage conditions | <30°C, 凉爽, 干燥 | <30°C, cool, dry |

| 产品特点 | Product Features |
|------|------------------|
|------|------------------|



流砂纹理清晰, 色彩通透柔和, 光滑和粗糙饰面的搭配方案
/ Clearly textured sand flow, translucent and soft colors, smooth and rough finishes in a matching scheme



珍珠光泽, 双色质感更强
/ Pearly luster with enhanced two-tone texture



提供3种颜色的基料, 以获得不同效果
/ Available in 3 colors of base material for different effects



柔软触感, 流砂观感
/ Soft touch, sandblasted look and feel



可以施工在不同介质的墙面
/ Can be applied to walls with different media



没有气味, 稳定
/ Odorless and stable



精致触感.天然顺滑, 更佳光泽。(MSX银色细砂基料)
/ Delicate touch, natural smoothness, better luster. (MSX Silver Fine Sand Base)

施工指南 Construction Guide



01

使用同色万磊沉浆砂底漆, 辊涂两遍(扫刷型加水量为20-25%)

Use the same color Wanlei sinker sand primer, roller coating two times (sweeping brush type adding water for 20-25% point)



03

在未干前用毛刷以“人”字手法不规则刷出纹理

Before drying, use the brush to brush out the texture irregularly technique.



02

主材经调色, 稀释后, 搅拌均匀

The main ingredient is toned, diluted and mixed well

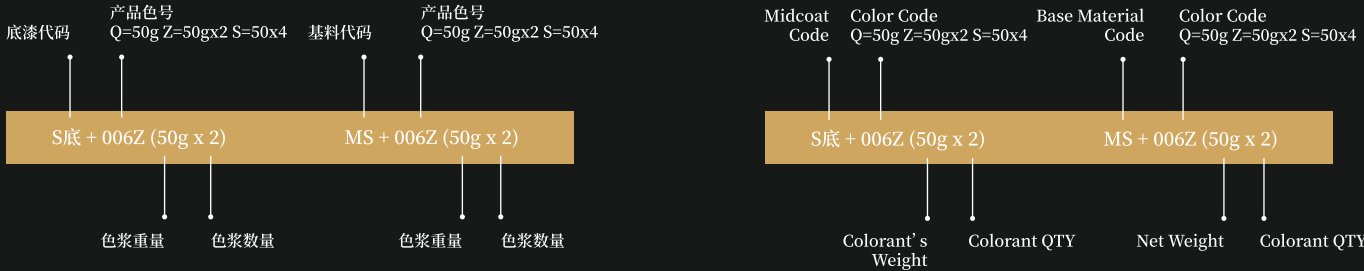


04

相隔2-4小时第一道施工干燥后, 重复施工, 效果完成

Repeat after the first coat dries 2-4 hours apart.Effect Completion

色彩系统 Colour System



参考用量 Coating Rate

4-5
m²/kg

实际覆盖范围将取决于表面的吸收能力和应用方法。

Actual coverage will depend on the absorbency of the surface and the method of application.

颜色配套 Color Ratio



底漆:5kg 配 100g
Primer: 5kg with 100g

主材:5kg 配 50g (示例)
Main material: 5kg with 50g (example)

产品包装 Product Packaging



规格/Specification:
4L/桶(barrel)

尺寸/Size:
21.5*21.5*18.5cm



万磊公众号



小程序



施工教程



VR全景