

CN.

EN.

产品综述 /

万磊习惯于创造新品。暮云纱(satin velvet), 细致丝滑的触感让人感叹, 极致的效果带来华丽的感觉, 它具有美观的天鹅绒布般效果, 格外适用于室内装修。

它是纯生态制品, 能产生珠光般闪耀光泽, 并根据光线的折射改变外观, 表面的珠光效果在专业灯光的调试下更为耀眼。

珠光温润光泽

万磊暮云纱(satin velvet)是一种室内装饰涂层, 由高品质的丙烯酸乳液与精选级绒毛混制而成。使用暮云纱装潢可以实现创新的色彩和触觉感官, 使环境极为舒适并符合室内装饰最前沿的趋势, 保持高品质的居室环境。

产品特点 /

- ① 精致触感。拥有独特的绒毛质感, 天然顺滑, 自然好效果
- ② 珠光素雅, 色彩通透柔和
- ③ 珍珠光泽, 柔和不刺眼: 有别于平光与亮光, 珍珠光泽特殊质感, 高雅又能增加涂刷的空间感。
- ④ 超级环保: 应用“IPS 新型聚合体合成工艺”的创新性除菌技术。没有溶剂, 不含有毒有害物质, 居室可以即刷即住。
- ⑤ 抗 UV 紫外线, 色彩稳定。
- ⑥ 特有的煅烧技术, 超高硬度, 抗刮无痕迹

产品净重 /

5 kg / 桶

主要成分 /

100%的丙烯酸树脂、微米级绒毛粉、高硬煅烧陶瓷砂、珠光粉、纳米碳酸钙粉, 纯净水

适用场景 /

仅限室内, 墙面装饰使用, 表面施作时避免接触水份。
适合场所: 儿童房空间的室内墙面, 内部客厅墙面等家居空间, 或商业空间亦可

加水比例 /

主材加水量控制在5%以内

配套体系 /

万磊沉浆砂底漆 + 暮云纱

Overview /

Vanlei is accustomed to creating new products. satin velvet, the delicate and silky touch makes people marvel, the ultimate effect brings a gorgeous feeling, it has a beautiful velvet cloth-like effect, especially suitable for interior decoration.

And according to the refraction of light to change the appearance of the surface of the pearlescent effect in the professional lighting debugging more dazzling.

Pearlescent warm luster

satin velvet is an upholstery coating made from a high-quality acrylic emulsion mixed with selected grades of velvet. The use of satin velvet upholstery allows for innovative color and tactile sensations, making the environment extremely comfortable and in line with the latest trends in interior decorating, maintaining a high quality living environment.

Features /

- ① Delicate touch. Has a unique fluffy texture, natural smooth, natural good results
- ② Pearl elegant, transparent and soft colors
- ③ Pearl luster, soft and not harsh: different from flat and glossy, pearl luster special texture, elegant and can increase the sense of space painting.
- Super environmental protection: the application of "IPS new polymer synthesis process" innovative sterilization technology. There is no solvent, does not contain poisonous and harmful substances, the room can be painted and live.
- ⑤ UV-resistant, stable color.
- ⑥ Special calcination technology, ultra-high hardness,

Net weight /

5 kg / barrel

Ingredients /

100% acrylic resin, micronized fluff powder, high hardness calcined ceramic sand, pearlescent powder, nano calcium carbonate powder, pure water

Applicable /

Only for indoor, wall decoration use, avoid contact with water when surface application.
Suitable places: children's rooms, living room walls and other home spaces, or commercial spaces.

Watering ratio /

Up to 5% of the watering ratio

Complementary system /

Vanlei Sinkers Sand Primer + Satin velvet

万磊建筑涂料有限公司

Foshan City Nanhai Wanlei Building Paint CO., LTD



广东生产基地（代码FS）

广东省佛山市南海区松岗万石工业区

广州分公司

广州市荔湾区羊城装饰材料市场172号

广西生产基地（代码QT）

广西壮族自治区贵港市覃塘区产业园甘化园

南宁分公司

广西壮族自治区南宁市兴宁区快环建材市场

△ 注意

公司根据产品技术和发展需要, 有权对产品配方进行更新升级, 而不对外另行公布, 请以最新样板册颜色为准, 不便之处, 敬请原谅!

4000-147-187

www.fswanlei.com

PRODUCT

暮云纱
Satin Velvet



MYS - 240901

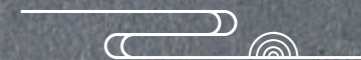
万磊



GOOD COATINGS IN CHINA
SINCE 1991



我們會成為那道
|| 國貨之光 ||



氣風發，準備迎接下一個三十年。」

註定充滿挑戰，「万磊已經三十歲了，我們正意
國貨最好的詮釋。國貨的崛起之路註定不平凡，
的舶來品。「堅持原創，堅持中國製造」，才是
的主旋律。適合國人的，不見得是各種價格虛高
在當代，『中國造』正在一步一步成為這個時代

是堅定的「國產支持者」。

矛盾催生新事物，國產與進口之間，万磊從來都

用時間定義好涂料，用技術沉淀中國貨。

万磊涂料「中國造，正当潮」



Satin Velvet

CN.

EN.

暮云纱,薄如蝉翼,行步生香 /

Thin As A Cicada's Wing /

暮云纱”是“以不同质地的蚕丝混制而成,在日光的照射下,可以折射出不同的光泽”。薄如蝉翼却又不显轻浮,层次分明却得品质深邃,万磊暮云纱拥有极细手感的丝滑绒毛,与其他品牌不一样的地方在于,他们能很好的匹配材料的均匀度和细滑度。这种具有岭南徽派特色的万磊暮云纱材料,堪称“冠绝中华”。

Satin Velvet Is A Mixture Of Different Textures Of Silk, Which Can Reflect Different Luster Under The Sunlight, Thin As A Cicada But Not Frivolous, Layered But With Deep Quality, Satin Velvet Has A Very Fine Feel Of Silky Velvet, Unlike Other Brands, They Can Match The Uniformity And Smoothness Of The Material. This Kind Of Vanlei Satin Velvet Material With The Characteristics Of Lingnan Huizhou Style Is Called "The Best In China".

S底 + 062Z (50g x 2)

MYS + 062Q (50g)

暮云纱
Satin velvet



S底 + 015Z (50g x 2) MYS + 015Q (50g)



S底 + 019Z (50g x 2) MYS + 019Q (50g)



S底 + 009Z (50g x 2) MYS + 009Q (50g)



S底 + 048Z (50g x 2) MYS + 048Q (50g)



S底 + 018Z (50g x 2) MYS + 018Q (50g)



S底 + 007Z (50g x 2) MYS + 007Q (50g)



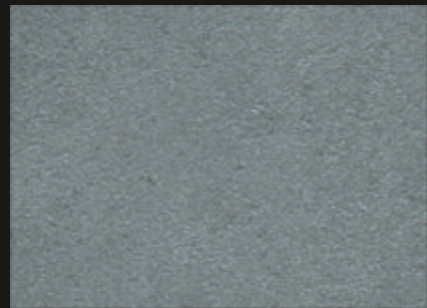
S底 + 017Z (50g x 2) MYS + 017Q (50g)



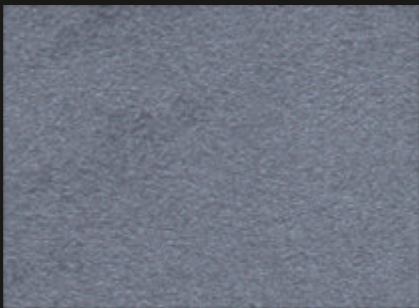
S底 + 020Z (50g x 2) MYS + 020Q (50g)



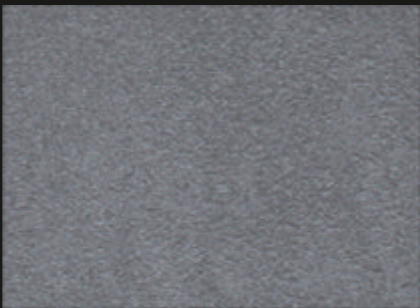
S底 + 003Z (50g x 2) MYS + 003Q (50g)



S底 + 050Z (50g x 2) MYS + 050Q (50g)



S底 + 043Z (50g x 2) MYS + 043Q (50g)



S底 + 045Z (50g x 2) MYS + 045Q (50g)



S底 + 001Z (50g x 2) MYS + 001Q (50g)



S底 + 004Z (50g x 2) MYS + 004Q (50g)



S底 + 040Z (50g x 2) MYS + 040Q (50g)



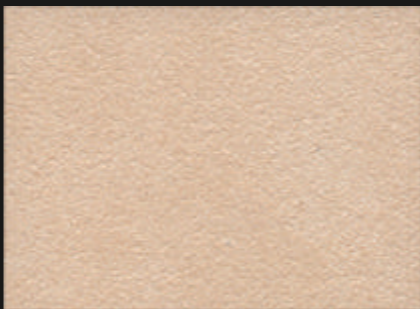
S底 + 006Z (50g x 2) MYS + 006Q (50g)



S底 + 029Z (50g x 2) MYS + 029Q (50g)



S底 + 010Z (50g x 2) MYS + 010 Q (50g)



S底 + 027Z (50g x 2) MYS + 027Q (50g)



S底 + 024Z (50g x 2) MYS + 024Q (50g)



S底 + 033Z (50g x 2) MYS + 033Q (50g)



S底 + 046Z (50g x 2) MYS + 046Q (50g)



S底 + 060Z (50g x 2) MYS + 060Q (50g)



S底 + 044Z (50g x 2) MYS + 044Q (50g)

暮云纱
Satin velvet

薄如蝉翼，行步生香

Satin velvet





技术参数	Technical data		
材料性能	Material Properties	无溶剂(水基)	Solvent-free (water-based)
干膜厚度	Thickness	0.2-0.3mm	0.2-0.3mmmm
理论覆盖率	Coating rate	2.5-3 m ² /kg	2.5-3 m ² /kg
干燥时间(表干)	Surface dry	<2h(25-27℃)	<2h(25-27℃)
触干	Touch dry	<4h (25-27℃)	<4h (25-27℃)
干燥时间(硬)	Hard dry	>24h(25-27℃)	>24h (25-27℃)
涂层	Coating layer	2次	2 times
使用寿命	Service life	> 10年	> 10 years
油漆颜色	Color selection	多色选择	Multi-color selection
施工工具	Construction Tools	羊毛辊筒/预调色搅拌器/ 调色托盘/打磨器	Wool roller/pre-toned color mixer/ Color mixing tray / grinder
贮存	Storage conditions	<30℃, 凉爽, 干燥	<30℃, cool, dry

产品特点	Product Features		
------	------------------	--	--



精致触感
拥有独特的绒毛质感,天然顺滑,自然好效果
Delicate touch.A unique fluffy texture that is naturally smooth and naturally effective.



珠光素雅, 色彩通透柔和
Pearlescent and elegant, translucent and soft colors



特有的煅烧技术, 超高硬度, 抗刮无痕迹
Special calcination technology, ultra-high hardness, anti-scratch without trace



抗UV紫外线, 色彩稳定
UV resistant and color stable



珍珠光泽, 柔和不刺眼:有别于平光与亮光, 珍珠光泽特殊质感, 高雅又能增加涂刷的空间感。
Pearly luster, soft and non-glare: Unlike flat and glossy, pearly luster has a special texture that is elegant and adds a sense of space to the application.



超级环保:应用“IPS新型聚合体合成工艺”的创新性除菌技术。没有溶剂, 不含有毒有害物质, 居室可以即刷即住。
Super environmental protection: Innovative sterilization technology by applying "IPS new polymer synthesis process". There is no solvent, does not contain poisonous and harmful substances, the room can be painted and live immediately.

施工指南 Construction Guide



01

使用同色万磊沉浆砂底漆, 辊涂两遍
(加水量为 20-25%)
Use the same color Wanlei sinker sand primer, roller coating two times (sweeping brush type adding water for 20-25% point and shoot type within 30-35%)



03

干透后再次平批上料, 薄批不能过厚, 用天鹅绒打磨器转圈打磨, 在半干时进行一次收压, 待倾干时进行纹理定型
Sweep brush type: Before drying, use the brush to brush out the texture irregularly technique.
Spot tapping: Use a wire tapping device to tap the surface before drying.



02

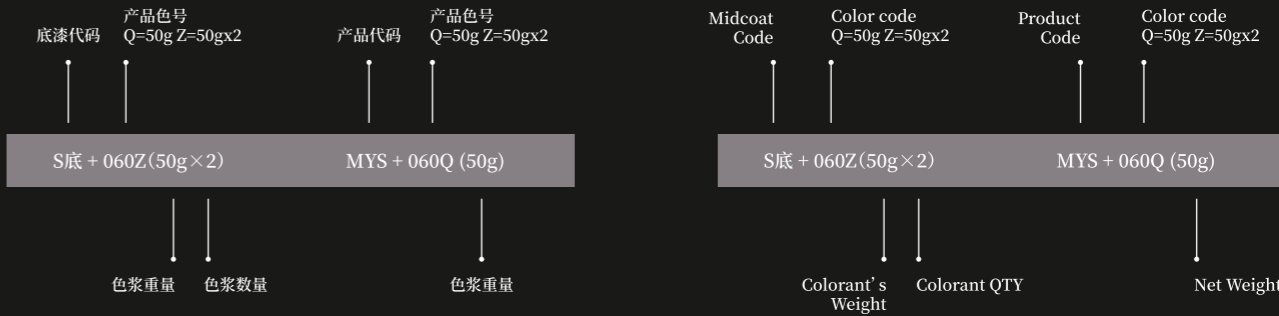
主材经调色校准后, 搅拌均匀后使用批刀满批上墙, 不均匀回收多余材料
The main material is calibrated by color mixing, mix well and then use a batch knife full batch on the wall, uneven recovery of excess material



04

产品
最终完成效果。
The finalized effect of the product.

色彩系统 Colour System



参考用量 Coating Rate

颜色配套 Color Ratio

产品包装 Product Packaging

2.5-3
m²/kg

实际覆盖范围将取决于表面的吸收能力和应用方法。
Actual coverage will depend on the absorbeny of the surface and the method of application.



底漆:5kg 配 100g
Primer: 5kg with 100g



主材:5kg 配 50g
Main material: 5kg with 50g (example)



规格/Specification:
5kg/桶(barrel)

尺寸/Size:
22.5*22.5*23.5cm



万磊公众号



小程序



施工教程



VR全景