

vanlei 万磊®

封面效果图型号:MNG - M50 (100g)

微 水 泥 | 灰 泥

專 門 研 究 社



PRODUCT

馬萊灰泥
VENETIAN PLASTER

SGS



S3




Vanlei adheres
to the consistent "high quality" style.

馬萊灰泥

Venetian Plaster





万磊马莱灰泥由熟石灰和细磨大理石粉制成
可打造出我们最精致、最光滑的饰面
可根据技术应用微妙的颜色变化、最小的纹理、低光泽
或高光泽抛光和深色变化

万磊马莱灰泥非常环保、健康，其品质会随着
时间的推移而提高

Venetian Plaster is made from slaked lime and
finely ground marble dust to create our most
delicate and smooth finishes!
Subtle color variations, minimal texture, low or high
gloss polishes and deep color variations can be
applied according to technique

Vanlei Venetian Plaster is a very environmentally
friendly and healthy mortar that improves in quality
over time.

马莱灰泥 | 环保配方设计

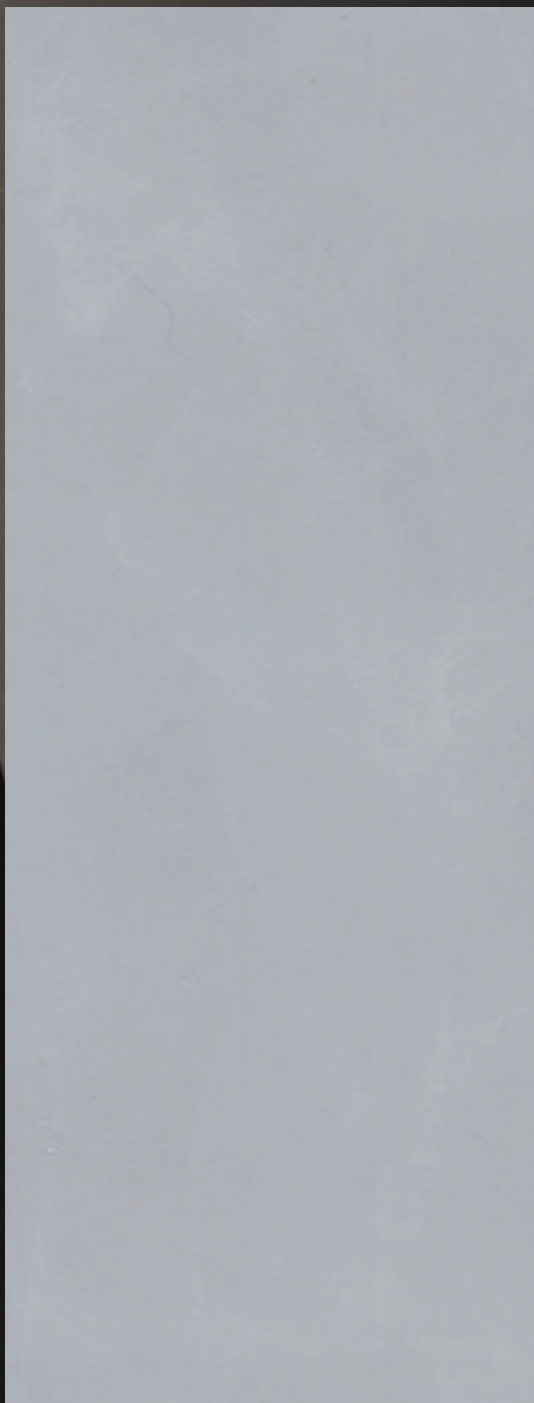
Environmentally Friendly Formulation

Vanlei Venetian Plaster 制造最精致的健康、环保、无毒的墙面饰面, 这些饰面不会释放气体 (零 VOC) 并且具有低过敏性。我们的产品不仅在外观、感觉和纹理方面具有无限的多功能性, 而且适用于现代和传统设计

Vanlei Venetian Plaster 石膏经久耐用, 随着时间的推移会变得更硬、更美观

Vanlei Venetian Plaster manufactures the finest healthy, eco-friendly, non-toxic wall finishes that are non-emitting (zero VOC) and hypoallergenic. Our products offer unlimited versatility in look, feel and texture, and are suitable for both modern and traditional designs!

Vanlei Venetian Plaster Plaster is durable and hardens and becomes more aesthetically pleasing over time.



S底+0682 (100g)

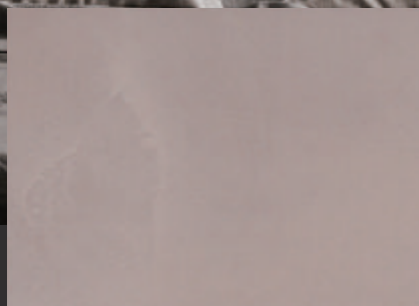
MNG - 0682 (100g)



S底+0682 (100g)

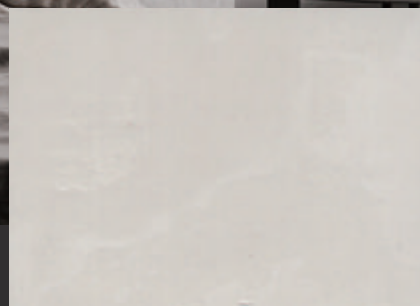
MNS - 0682 (100g)





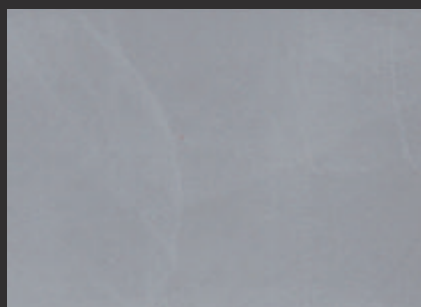
S底+M50 (100g)

MNG - M50 (100g)



S底+0671 (100g)

MNG - 0671(100g)



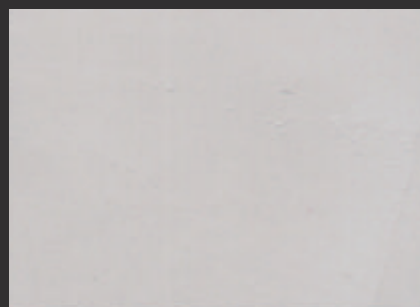
S底+M101 (100g)

MNG - M101(100g)



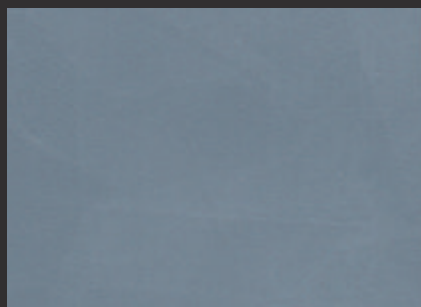
S底+M102 (100g)

MNG - M102(100g)



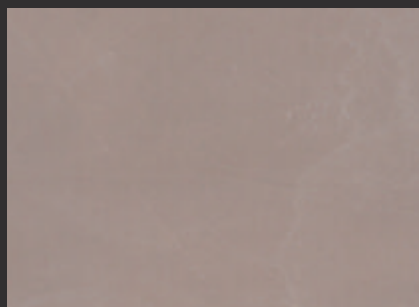
S底+M76 (100g)

MNG - M76(100g)



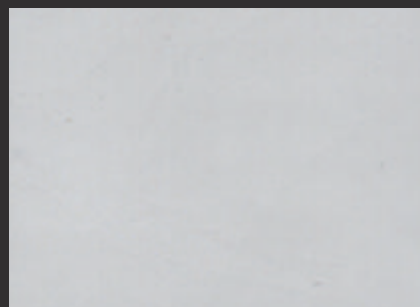
S底+M118 (100g)

MNG - M118(100g)



S底+M38 (100g)

MNG - M38(100g)



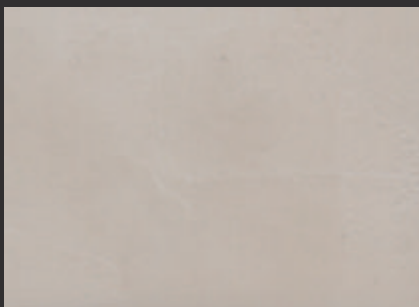
S底+M74 (100g)

MNG - M74(100g)



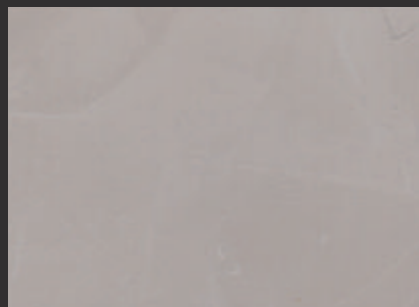
S底+0668 (100g)

MNS - 0668(100g)



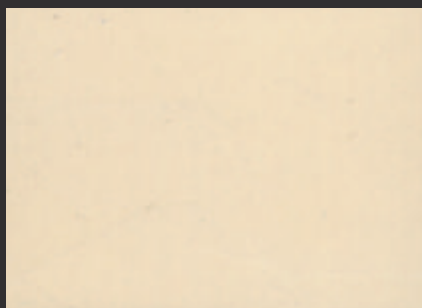
S底+0669 (100g)

MNS - 0669(100g)



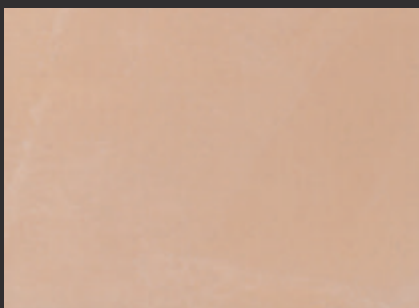
S底+M76 (100g)

MNS - M76(100g)



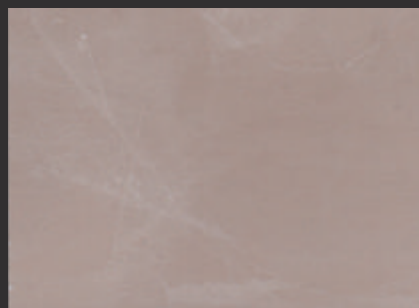
S底+0670 (100g)

MNS - 0670(100g)



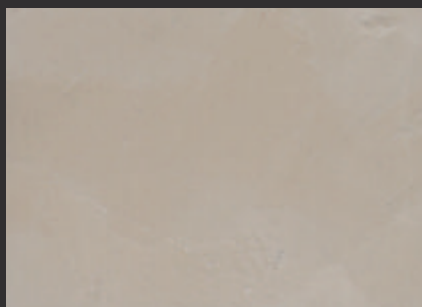
S底+0672 (100g)

MNS - 0672(100g)



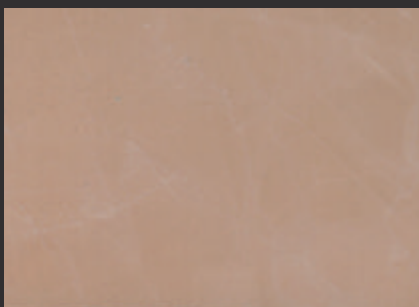
S底+0673 (100g)

MNS - 0673(100g)



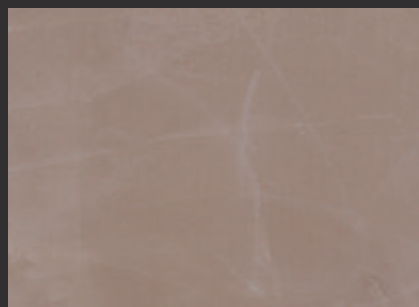
S底+0671 (100g)

MNS - 0671(100g)



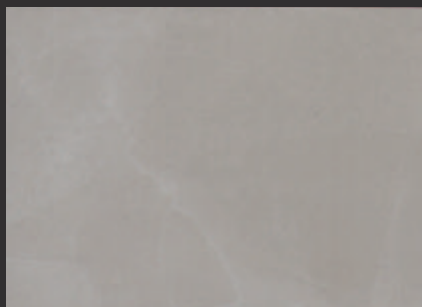
S底+0674 (100g)

MNS - 0674(100g)



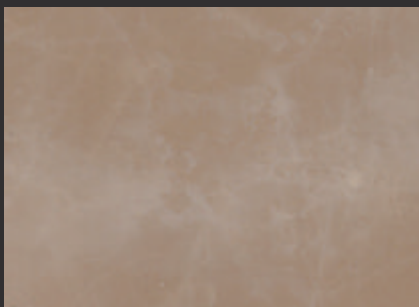
S底+M107 (100g)

MNS - M107(100g)



S底+0677 (100g)

MNS - 0677(100g)



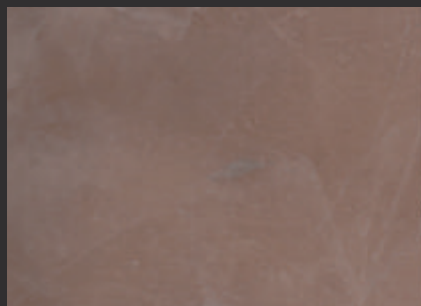
S底+M29 (100g)

MNS - M29(100g)



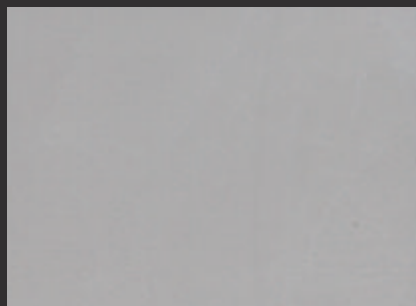
S底+M79 (100g)

MNS - M79(100g)



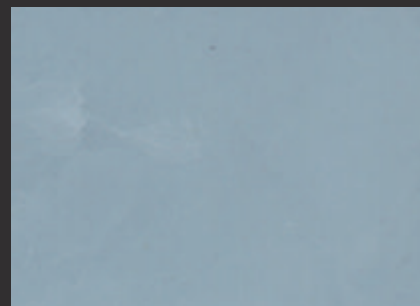
S底+M50 (100g)

MNS - M50(100g)



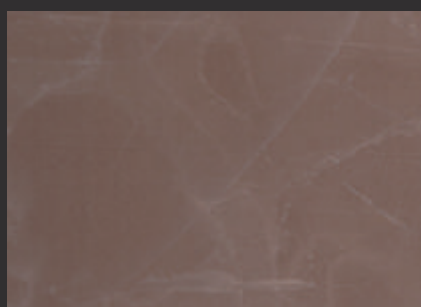
S底+M74 (100g)

MNS - M74(100g)



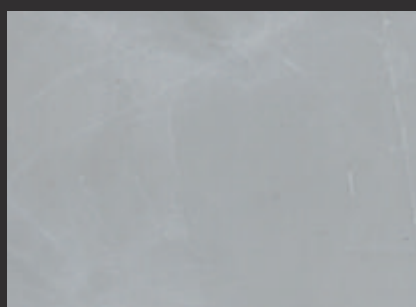
S底+M78 (100g)

MNS - M78(100g)



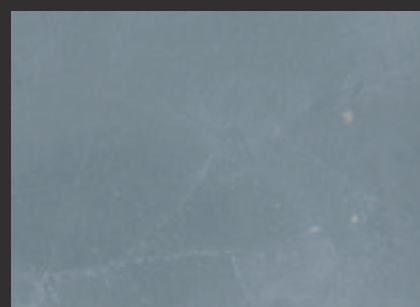
S底+M106 (100g)

MNS - M106(100g)



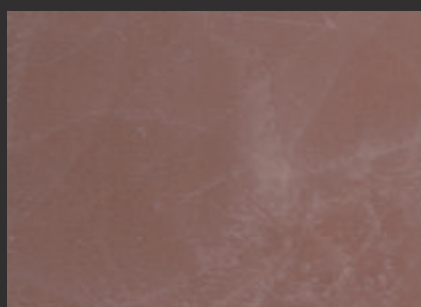
S底+0678 (100g)

MNS - 0678(100g)



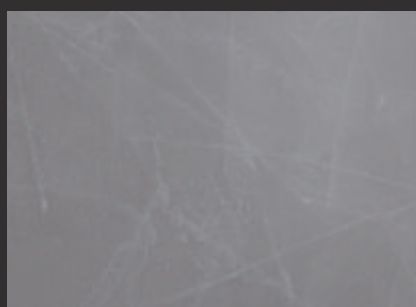
S底+M81 (100g)

MNS - M81(100g)



S底+M108 (100g)

MNS - M108(100g)



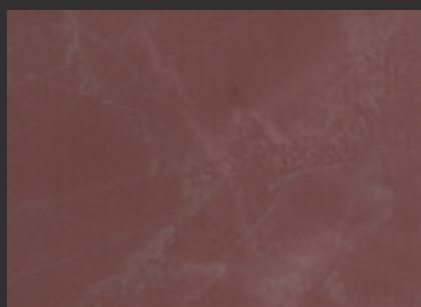
S底+0682 (100g)

MNS - 0682(100g)



S底+M55 (100g)

MNS - M55(100g)



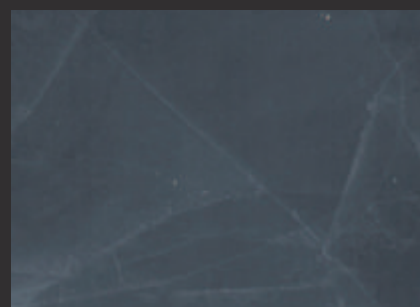
S底+M54 (100g)

MNS - M54(100g)



S底+M41 (100g)

MNS - M41(100g)



S底+M118 (100g)

MNS - M118(100g)

VENETIAN PLASTER

万磊 - 马莱灰泥

拥有无线的颜色组合和创意风格

技术参数		Technical parameters	
材料性能	Material Properties	无溶剂(水基)	Solvent-free (water-based)
干膜厚度	Dry film thickness	2mm	2mm
理论覆盖率	Theoretical coverage	2.5-4.5m ² /kg	2.5-4.5m ² /kg
干燥时间(表干)	Drying time (surface drying)	>4h(25-27°C)	>4h(25-27°C)
触干	Touch dry	<2h(25-27°C)	<2h(25-27°C)
干燥时间(硬)	Drying time (hard)	>24h(25-27°C)	>24h(25-27°C)
涂层	Coating layer	3次	3times
使用寿命	Service life	>10年	>10years
油漆颜色	Paint color	多色选择	Multi-color selection
施工方式	Application method	羊毛辊,批刀	Wool roller, batch knife
贮存	Storage	<30°C,凉爽,干燥	<30°C, cool, dry

产品特点

Product Features



外观和质地-纹理清晰明亮,触感光滑

Appearance and texture - Clear and bright texture, smooth to the touch.



提供金属色/素色效果,无限搭配/组合创意

combination ideas Provide metallic/plain color effects, unlimited matching



多种风格-它可以做出复古和欧式风格

Multiple styles - it can make vintage and European style



超低 VOC -低 VOC 配方

Ultra Low VOC-Low VOC formulations



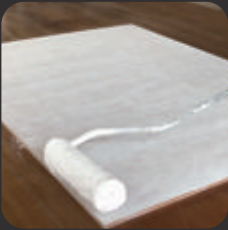
易于维护-防水功能和防霉设计

Easy to maintain -Waterproof function and anti-mold design



可大面积涂刷 -无缝、细微的色差

Appearance and texture - Clear and bright texture, smooth to the touch.



01

沉浆砂底漆调同色
滚涂两遍

Sinker sand primer in the
same color
Rolling two times



03

干燥后用细砂纸轻微打磨
找平去尘

Lightly sand with fine sandpaper
after drying
Leveling and dust removal



02

选定色号, 平批主料两遍
每道须干透

Choose the color number and apply
two coats of the main material.
Each coat must be dry



04

不规则用批刀叠加点批上料
根据纹理的方向进行调整

Irregularities are batched with a batch
knife in overlapping spots
Adjust to the direction of the texture


纹理多样性 Texture Diversity

不规则“点”批后回收浆料,再用专用刮刀进行多重抛光
为了提高表面的光泽度,建议用极细的砂纸(如1200目)打磨表面,就像用于车身的砂纸一样,然后使用钢制批刀重复抛光表面

Recycled paste after irregular "spot" batching, then multiple polishing with a special scraper.
To improve the gloss of the surface, it is recommended to sand the surface with a very fine sandpaper (e.g. 1200 grit),
like the one used for the bodywork, and then to repeat the polishing of the surface with a steel blade.

万磊马莱漆家族

Stucco Series

产品		马莱灰泥-素色	马莱灰泥-金属	马莱漆	威尼斯泥	皇家白玉-威廉	材料状态	优秀标准
适用区域		内墙	内墙	内墙	内墙	内墙/可调外墙	液态	 万磊艺术涂料 获得法国VOC标签 A+认证
配色体系		基料+色浆	基料+色浆	基料+色浆	基料+色浆	基料+色浆		
包装规格		7.5kg	6.5kg	5kg、20kg	6kg	6kg		
光泽度	20°	0.8	1.4	1.8	2.6	4.2		
	60°	4.1	5.3	8.5	16	27		
	85°	18.2	16.8	42	64	87		



微信公众号



小程序

马莱灰泥 VENETIAN PLASTER

马莱灰泥由大理石粉制成。可以拥有无限的颜色组合和创意风格。灰泥可具有柔软、丝滑的表面,光泽度低,或可打磨成高光泽。马莱灰泥可用于大面积区域,替代油漆,或用于装饰区域

马莱灰泥是一种用于室内的砖石覆盖物,可获得独一无二的装饰性饰面,类似于威尼斯古建筑中的灰泥。它可应用于特定的建筑元素,例如檐口和柱子。它可与矿物密封剂一起用于室内,既适合传统环境,也适合现代环境

Venetian Plaster is made from marble dust. It is available in an infinite number of color combinations and creative styles. The stucco can have a soft, silky surface with a low sheen or can be sanded to a high gloss. Marlite plaster can be used for large areas, as an alternative to paint, or for decorative areas.

Venetian Plaster is a masonry covering for interiors that gives a unique decorative finish, similar to the stucco used in ancient Venetian architecture. It can be applied to specific architectural elements such as cornices and columns. It can be used indoors with mineral sealers, suitable for both traditional and modern environments.

CN

主要成分

纳米级丙烯酸乳液、纳米碳酸钙粉、纯净水、珠光粉

适用范围

室内,墙面装饰使用

石膏板:(仅限室内)涂抹马莱灰泥前,应先对表面进行检查,并注意打磨平整,仅使用矿物底漆或推荐的乳胶或丙烯酸底漆

现有的涂漆基材:只要是乳胶或丙烯酸(水性),马莱灰泥就能粘附在先前存在的涂漆表面上。我们建议在涂抹石膏之前先打磨表面以获得更好的粘附性,并擦去灰尘。如有必要,在涂抹马莱灰泥之前使用万磊金装透明底漆或推荐的乳胶或丙烯酸底漆。现有的墙面:马莱灰泥可应用于现有的中等纹理,如橘皮或轻型跳跃抹刀。涂上第一层以覆盖纹理。厚度过大可能会出现轻微开裂,只要没有分层或剥落,这是可以接受的不建议用于室外

配套体系: 沉浆砂底漆 + 马莱灰泥主材 (金属色/素色)

配套比例: 沉浆砂底漆: 5kg:100g 无机色浆 马莱灰泥主材: (6.5/7.5kg):100g

基面要求

- ① 必须使用耐水腻子粉,表面平整无脱落或掉粉现象
- ② (轻微)掉粉时:辊涂无机养护液(兑水10-20%)一遍,12小时后再施工

执行标准: GB 18582-2020《室内装饰装修材料内墙涂料中有害物质限量》

保质期: 常温干燥状态下18个月(原装出厂时)

EN

Ingredient

Nano grade acrylic emulsion, nano calcium carbonate powder, pure water, pearlescent powder

Scope of application

Interior, Wall Decoration

Plasterboard: (Interior only) Before applying Venetian Plaster, the surface should be inspected, sanded and smoothed, and only mineral primers or recommended latex or acrylic primers should be used.

Existing painted substrates: Venetian Plaster will adhere to pre-existing painted surfaces as long as they are latex or acrylic (water-based). We recommend sanding the surface for better adhesion and wiping off dust before applying the plaster. If necessary, use Marleys Gold Clear Primer or recommended latex or acrylic primer on existing textured walls before applying Marleys Plaster: Marleys Plaster can be applied to existing medium textures such as orange peel or light jumping spatulas. Apply the first coat to cover the texture. Excessive thickness may cause slight cracking, which is acceptable as long as there is no delamination or flaking.

complementary system

Sinker sand primer + Venetian Plaster main material (metallic/plain)

Matching ratio

primer: 5kg:100g inorganic color paste Main material: (6.5/7.5kg):100g

Substrate requirements

- ① Must use water-resistant putty powder, the surface is smooth without peeling or powder phenomenon.
- ② (slight) powder: roller coating inorganic maintenance solution (10-20% of water) once, 12 hours after construction

Implementation standards: GB 18582-2020

Shelf life:

18 months in dry condition at room temperature (at the time of original shipment)



包装规格: 7.5kg/桶

Packaging specification: 7.5kg/barrel



耗材标准: 马莱灰泥素色: 2.5-3m²/kg ; 马莱灰泥金属色: 4-4.5m²/kg

Consumable standard: plain color: 2.5-3m²/kg; metallic color: 4-4.5m²/kg

万磊建筑涂料有限公司

Foshan City Nanhai Wanlei Building Paint CO., LTD



广东生产基地 (代码FS)

广东省佛山市南海区松岗万石工业区

广州分公司

广州市荔湾区羊城装饰材料市场118号

广西生产基地 (代码QT)

广西壮族自治区贵港市覃塘区产业园甘化园区

南宁分公司

广西壮族自治区南宁市兴宁区快环建材市场

⚠ 注意

公司根据产品技术和发展需要,有权对产品配方进行更新升级,而不对外另行公布,请以最新样板册颜色为准,不便之处,敬请原谅!

4000-147-187 www.fswanlei.com