



中國造 正当潮

中國的·好塗料

— SINCE 1991 —



万磊建筑涂料有限公司
VANLEI BUILDING PAINT CO.,LTD



广东生产基地（代码FS）
广东省佛山市南海区松岗万石工业区

广州分公司
广州市荔湾区羊城装饰材料市场172号

广西生产基地（代码QT）
广西壮族自治区贵港市覃塘区产业园甘化园区

南宁分公司
广西壮族自治区南宁市兴宁区快环建材市场

全国客服热线
4000-147-187
www.fswanlei.com

△ 注意
公司根据产品技术和发展需要，有权对产品配方进行更新升级，而不对外另行公布，请以最新样板册颜色为准，不便之处，敬请原谅！



浮·光·雪·影

— PEARLESCENT EFFECT —



浮光雪影 (Pearlescent effect)

“万磊浮光雪影”配备有密度更高、更集中的珠光粉末，并根据光线的折射改变外观，有助于提升空间的整体亮度

主要成份：

净味乳液、煅烧型高岭土、珠光粉末、纤维素、纯净水

产品特点：

A. 流砂纹理清晰，色彩通透柔和
B. 珍珠光泽，双色质感更强
C. 超高硬度，高耐擦洗

适用范围：

欧式风格如：高级的欧式宴会厅、酒店大堂、典雅别墅、奢华的精品店等

参考用量：批涂：2.5m²/kg/2遍 刷涂：4.5m²/kg/2遍

产品净重：5kg/桶

色彩选用：S底漆（必备）+浮光雪影

配套工具：羊毛辊筒、毛刷、批刀

基面要求：

- ① 砂浆基底达到一定平整度后，底层不需要施工腻子粉找平
- ② 水泥砂浆基面需要保养6天以上，PH小于11度
- ③ 旧墙翻新时，需要基面平整无裂纹，无脱落，无起鼓，无灰尘，无油污污垢

施工工艺：

- ① 刷涂工艺：加入最高 40% 的清水稀释，将主材搅拌均匀
- ② 辊涂一遍专用的同色底漆
- ③ 不同方向扫刷主材
- ④ 相隔2-4小时第一道施工干燥后，重复施工

选择性施工：

干燥24小时后，假如需要防水处理，可选择使用罩面保护

执行标准：

GB 18582-2020 《室内装饰装修材料内墙涂料中有害物质限量》

保质期：

常温干燥状态下24个月（原装出厂时）

环保承诺：

本产品不添加任何重金属等有害物质，不超出最新内墙装饰材料有害物质限量的国家标准，完全符合中国环境产品技术要求。

注意事项：

- 1、使用主材料之前，请充分搅拌均匀
- 2、请有效分隔、覆盖和遮蔽木制品与墙面的区域
- 3、气温低于10℃，相对湿度大于80%情况下不能施工
- 4、同型号不同批次产品会存在色差

技术支持：

如需帮助，请咨询万磊公司 (0757-85230301)

 包装规格 :5kg / 桶

 装箱标准 : -----

 耗材标准 : 4.5m²/kg/2遍

Pearlescent effect

“Wanlei Pearlescent effect” with a denser and concentrated pearlescent powder, changing the appearance according to the refraction of light, it helps to increase the overall brightness of the space.

Main ingredients:

Flavor-clearing emulsion, calcined kaolin, pearlescent powder, cellulose, water

Advantage:

- A. Clear sand texture and soft color
- B. pearl luster, double color texture
- C. Ultra-high hardness, scrub resistance

Application:

European style such as: European banquet hall, hotel lobby, villas, luxury boutiques and so on

Theoretical coverage :

Batch coating: 2.5m²/kg/2 times brush coating: 4.5m²/kg/2 times

N.W.: 5kg/barrel

Coating System: S primer (Necessary) + Pearlescent effect

Construction tools : Wool roller, brush, batch knife

Base surface requirements:

- ① After the mortar base reaches a certain flatness, the bottom layer does not need to be leveled with construction putty powder
- ② The cement mortar base needs to be maintained for more than 6 days, and the pH is less than 11 degrees
- ③ When the old wall is renovated, the base surface shall be flat without cracks, falling off, bulging, dust, oil stains and dirt

Construction method:

- ① Brush coating process: add up to 40% clean water to dilute, and stir the main materials evenly
- ② Roll coated with one coat of special color primer
- ③ Brush main materials in different directions
- ④ Repeat the construction after the first construction is dried at an interval of 2-4 hours

Optional Construction:

After drying for 24 hours, if waterproof treatment is required, cover protection can be selected.

Standard No :

GB 18582-2020 interior decoration materials - Limits of harmful substances in interior wall coatings

Shelf life:

24 months in dry condition at room temperature (the original package leaves the factory)

Environmental Commitment:


This product does not add any heavy metals and other harmful substances, does not exceed the latest national standards for harmful substances in interior wall decoration materials, and fully meets the technical requirements of China's environmental products.


Notes:


1. Before using the main material, please stir well
2. Please effectively separate, cover and shade the area of wood products and walls
3. The temperature is lower than 10 °C, and the relative humidity is greater than 80% can not be constructed.
4. There will be color difference between different batches of products of the same model

Technical support:

For any assistance, please contact Wanlei Company (0757-85230301).

 N.W. : 5kg / barrel

 Packing standards : -----

 Theoretical coverage : 4.5m² /kg/2times



浮光雪影 (Pearlescent effect)

“万磊浮光雪影”配备有密度更高、更集中的珠光粉末，并根据光线的折射改变外观，有助于提升空间的整体亮度。

“Wanlei Pearlescent effect” with a denser and concentrated pearlescent powder, changing the appearance according to the refraction of light, it helps to increase the overall brightness of the space.



vanlei万磊®

浮光雪影
PEARLESCENT EFFECT



S底 + M23 (100g x 2)

FGX + M23 (100g)



取材珍珠粉末, 品相出众
made of pearl powder, outstanding appearance



防水性革新
Newly upgrade formula, excellent waterproof



色彩鲜明, 手感细腻
Bright colors and delicate touch



S底 + M23 (100g x 2)

FGX + M23 (100g)



S底 + M69 (100g x 2)



FGX + M69 (100g)



S底 + M69 (100g x 2)

FGX + M69 (50g)

S底 + M69 (100g x 2)

FGX + M69 (30g)



S底 + M69 (100g x 2)

FGX + M69 (10g)



S底 + M75 (100g x 2)

FGX + M75 (100g)



S底 + M75 (100g x 2)

FGX + M75 (50g)



S底 + M75 (100g x 2)

FGX + M75 (30g)



S底 + M75 (100g x 2)

FGX + M75 (10g)



S底 + M73 (100g x 2)



FGX + M73 (100g)



S底 + M73 (100g x 2)

FGX + M73 (50g)

S底 + M73 (100g x 2)

FGX + M73 (30g)



S底 + M73 (100g x 2)

FGX + M73 (10g)



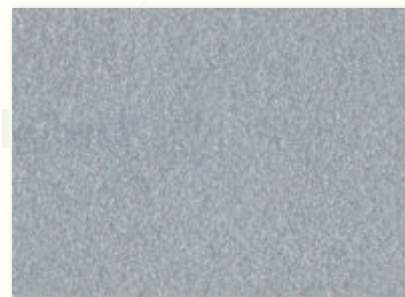
S底 + M23 (100g x 2)

FGX + M23 (100g)



S底 + M23 (100g x 2)

FGX + M23 (50g)



S底 + M23 (100g x 2)

FGX + M23 (30g)

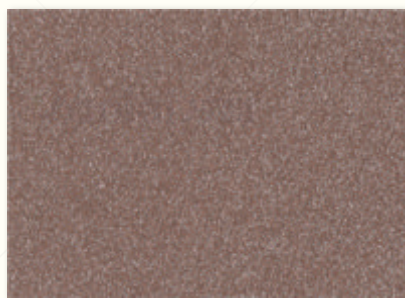


S底 + M23 (100g x 2)

FGX + M23 (10g)



S底 + M50 (100g x 2)



FGX + M50 (100g)



S底 + M50 (100g x 2)

FGX + M50 (50g)

S底 + M50 (100g x 2)

FGX + M50 (30g)



S底 + M50 (100g x 2)

FGX + M50 (10g)



S底 + M80 (100g x 2)

FGX + M80 (100g)



S底 + M80 (100g x 2)

FGX + M80 (50g)



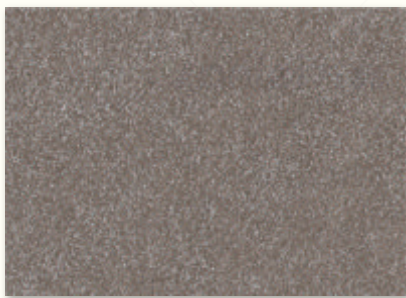
S底 + M80 (100g x 2)

FGX + M80 (30g)

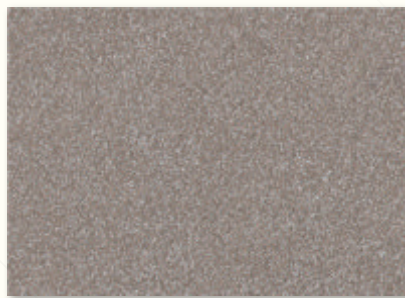


S底 + M80 (100g x 2)

FGX + M80 (10g)



S底 + M72 (100g x 2)



FGX + M72 (100g)



S底 + M72 (100g x 2)

FGX + M72 (50g)

S底 + M72 (100g x 2)

FGX + M72 (30g)



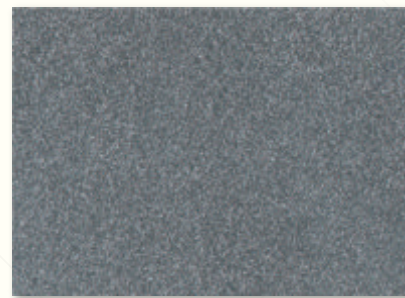
S底 + M72 (100g x 2)

FGX + M72 (10g)



S底 + M55 (100g x 2)

FGX + M55 (100g)



S底 + M55 (100g x 2)

FGX + M55 (50g)



S底 + M55 (100g x 2)

FGX + M55 (30g)



S底 + M55 (100g x 2)

FGX + M55 (10g)



S底 + M41 (100g x 2)



FGX + M41 (100g)



S底 + M41 (100g x 2)

FGX + M41 (50g)

S底 + M41 (100g x 2)

FGX + M41 (30g)



S底 + M41 (100g x 2)

FGX + M41 (10g)



S底 + M84 (100g x 2)

FGX + M84 (100g)



S底 + M84 (100g x 2)

FGX + M84 (50g)



S底 + M84 (100g x 2)

FGX + M84 (30g)



S底 + M84 (100g x 2)

FGX + M84 (10g)